

The practical application of comparative judgement in risk management

James Creasey, Manager Strategy and Risk
March 2017

Ofwho?

Ofqual Office of
Qualifications
and Examinations
Regulation

A horizontal row of ten small green squares, positioned below the 'Ofqual' text and above the 'Regulation' text.

Systemic risk – definition

“Events or changes in circumstances that could impact on multiple regulated bodies or multiple qualifications in ways that could affect our ability to meet our statutory objectives”

Why use a comparative judgement approach?

We are better at making comparative rather than absolute judgements

Effective way to compare different risks

Reduces potential bias

Manageable way of obtaining multiple perspectives

Broadens engagement in topic

It gives a score

No More Marking Platform

The screenshot displays a digital marking platform interface. At the top, a blue navigation bar contains a red circular icon with a white question mark, a blue button labeled '< Left <', a white text box with the question 'Which risk would have the largest IMPACT if it occurred?' and the number '7', a blue button labeled '> Right >', and a blue home icon. Below this, two side-by-side document windows are shown. Each window has a dark grey header with a search icon, navigation arrows, 'Page: 1 of 1', zoom controls, and a refresh icon. The left window contains the text 'There is 15mm of rain tomorrow'. The right window contains the text 'A 1000kg meteorite strikes the Ofqual office'.

Which risk would have the largest IMPACT if it occurred? 7

There is 15mm of rain tomorrow

A 1000kg meteorite strikes the Ofqual office

Risk workflow



Components of risk

Likelihood

Measure of how likely it is that something will go wrong

Impact

Measure of the harm that could be caused if something goes wrong

Which risk would have the largest IMPACT if it occurred? 7

There is 15mm of rain tomorrow

A 1000kg meteorite strikes the Ofqual office

Some “factoids” from the exercise

Number of people consulted?

19 interviewees

39 judges

(all Board members, Leadership Team members)

Number of risks?

25 for Round 1

38 for Round 2

**Number of judgements made?
2200**

Outcomes

Deep data set

Able to better understand our risks

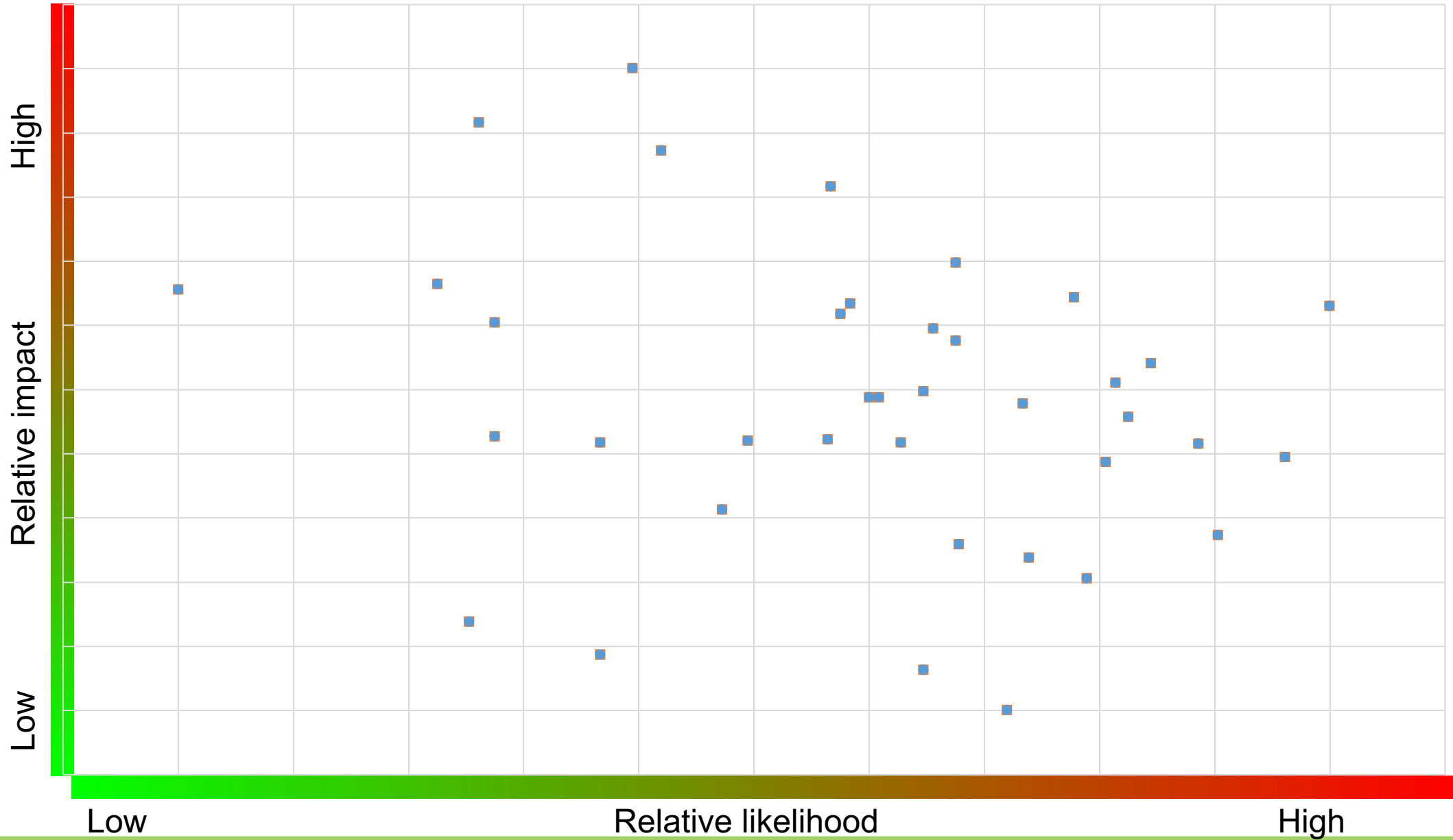
Able to compare the views of groups of judges

Able to view changes over time

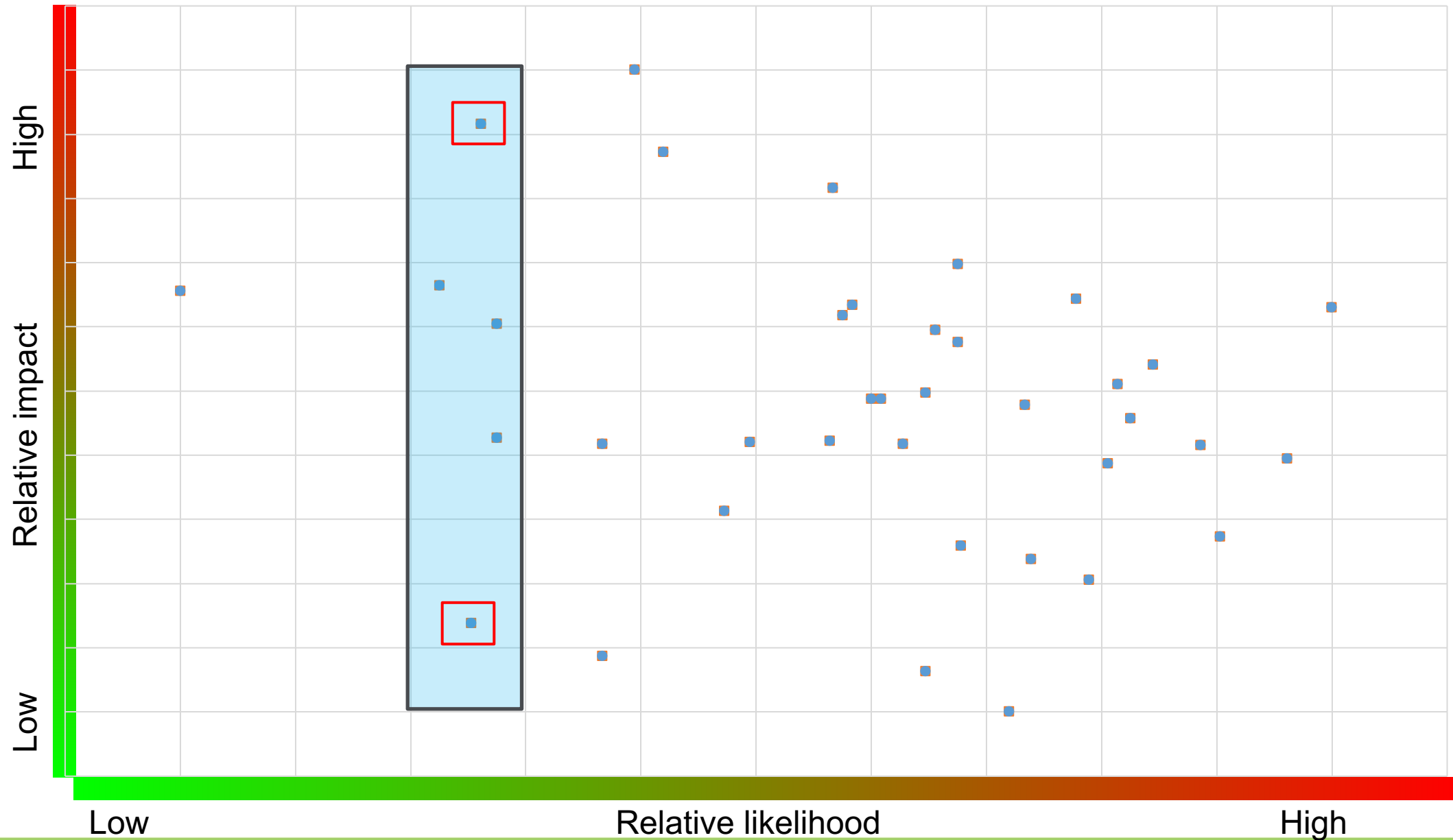
We multiplied the impact and likelihood scores to generate an overall exposure score for each risk

This gives a sense of what priorities are for Ofqual

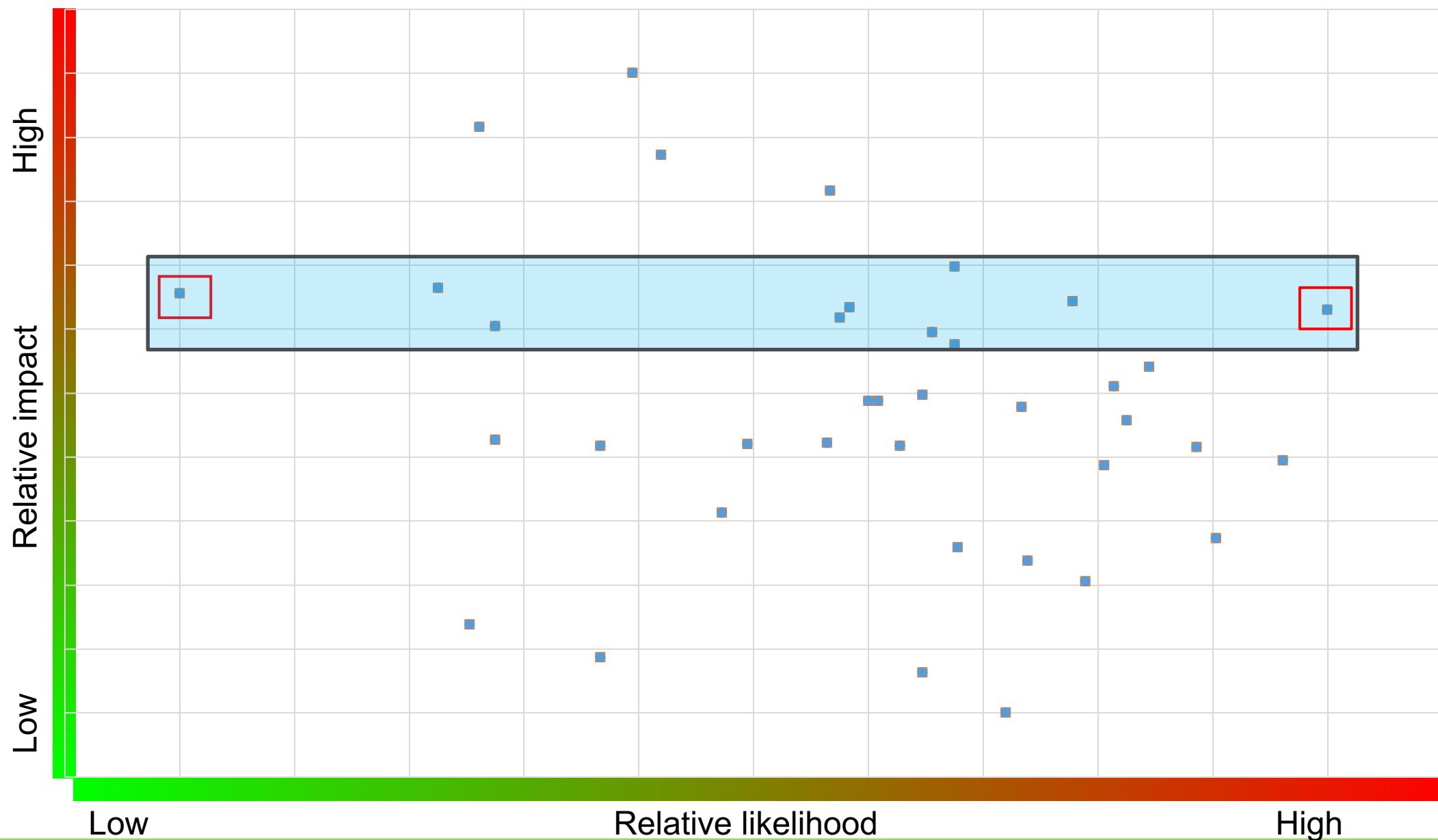
Comparative judgement results



Comparative judgement results - Leadership team and Board members



Comparative judgement results - Leadership team and Board members



Lessons learnt

Fantastic tool at driving engagement

Better understanding of perceptions

Low additional resource cost*

Better informed decisions

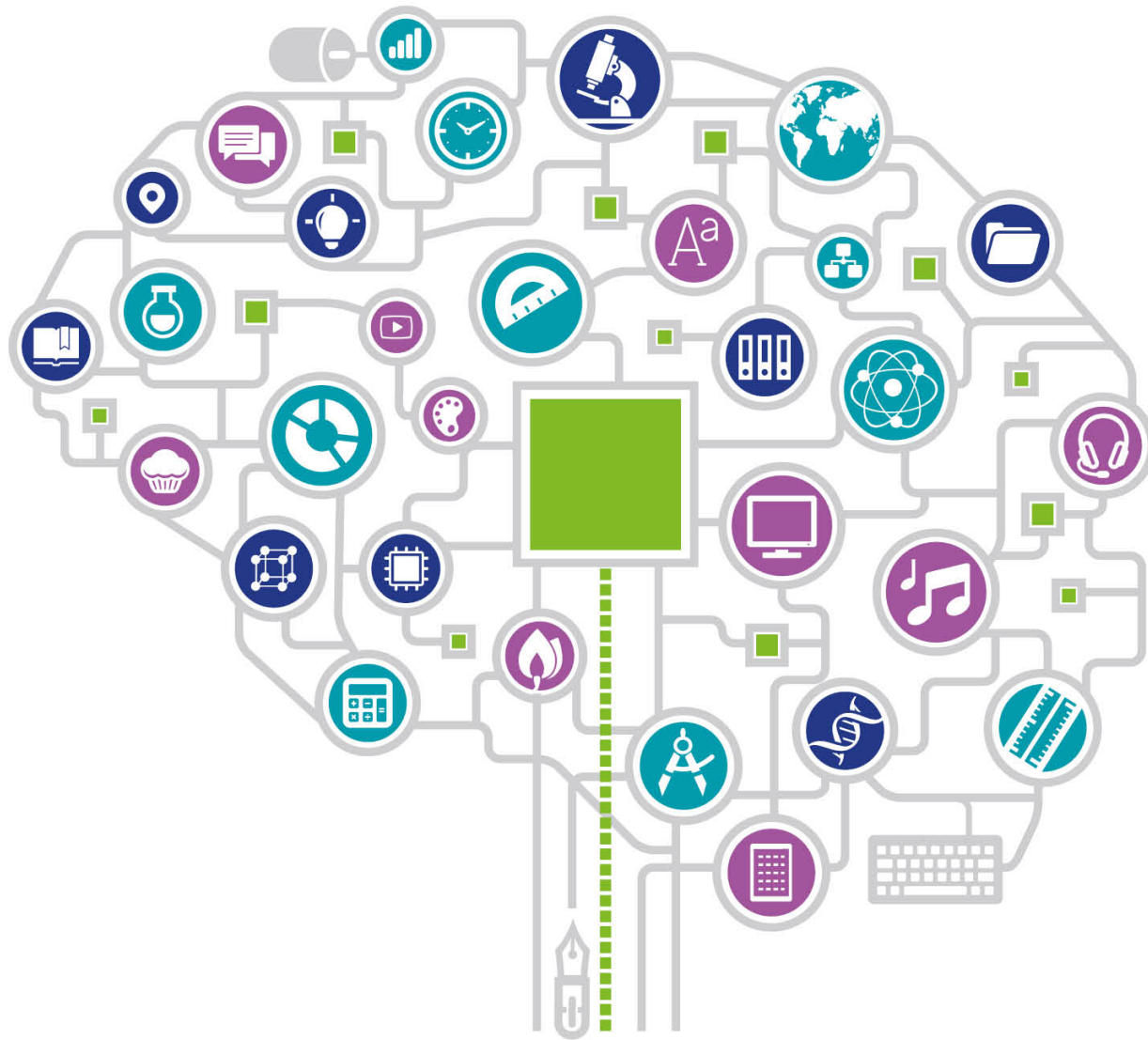
Based on expert judgement

Tool for helping for strategy, not an end in itself

Based on expert judgement – but still judgement of individuals

Need to frame the risk, not just a pure statement of the event

*Your mileage may vary



Any questions?

James Creasey, Risk and Strategy Manager

March 2017